

目 录

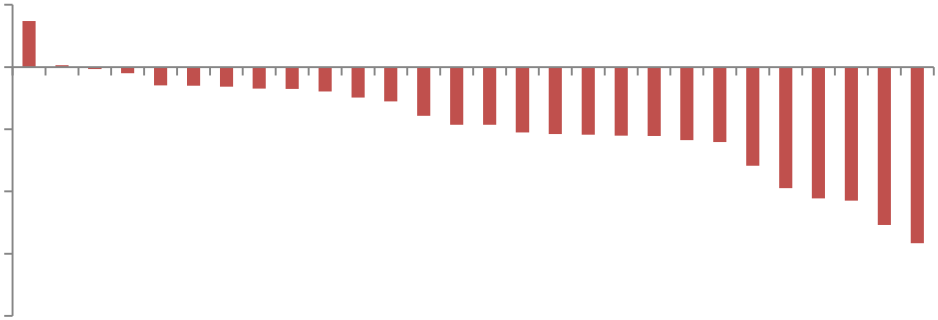
.....	2
.....	2
.....	2
.....	3
.....	3
.....	3
30	4
.....	4
.....	4
.....	5
30 A	5
.....	5
.....	6
1 2020 GDP 1015986 2.3%.....	6
2 2 PMI 50.9 51.5.....	6
3 30%.....	7
4	8
5 " "	9
6 1	10

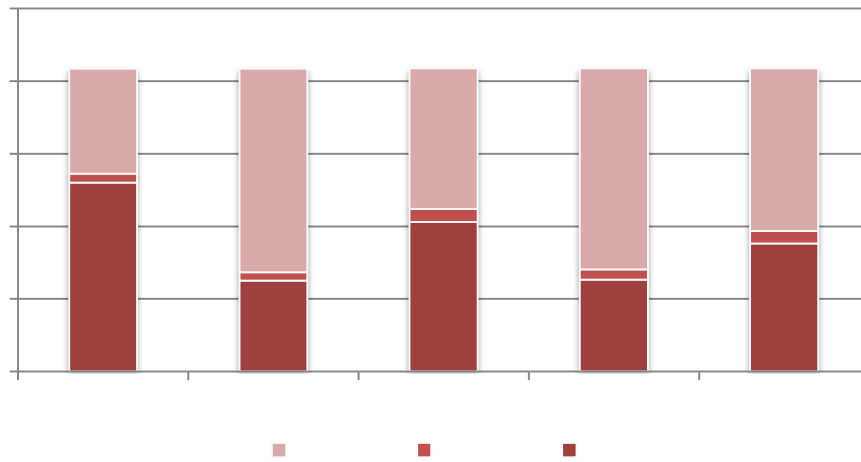
	3509.08	-5.06%
	14507.45	-8.31%
	9706.99	-9.15%
	2914.11	-11.30%
300	5336.76	-7.65%
	28980.21	-5.43%
500	3811.15	-2.45%
(WIND 2021-2-2 2021-2-26)		

2021-2-22 2021-2-26 A

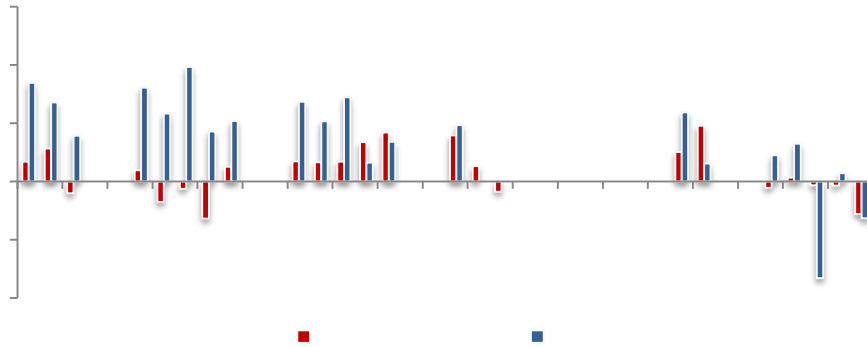
5.06% 3509.08 8.31% 14507.45

11.30% 2914.11

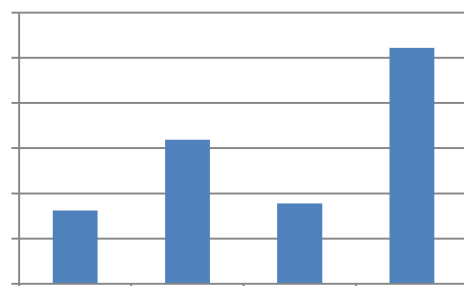
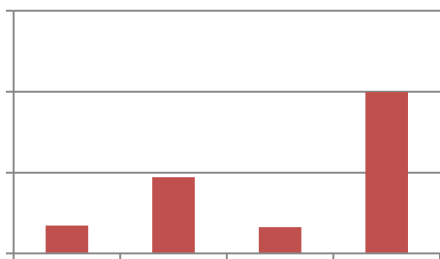




	-75.01	-126.91
	412.24	749.30
	811.81	3855.54



QFI I	24492.81	2.81%	3.76%
	24470.34	2.80%	3.76%
	22.47	0.00%	0.0034%



30 A

1 2020 GDP 1015986 2.3%

2 28 2020

1015986 2.3%

77754 3.0% 384255

2.6% 553977 2.1%

7.7% 37.8% 54.5%

0.5

2.2 0.7

2 2 PMI 50.9 51.5

2 PMI 50.6% 2

51.9% 51.5%

1.6 0.8

55.0%

48.8%

49.6% 1.4 0.2



60.8%

66.7%

4

60.0%

70.0%

1.3

58.5%

PMI 52.2%

0.1

PMI

49.6%

48.3%

1.8

1.1

59.2%

1.3

3

36.2%

18.3%

3

30%

2 24



0.1% 2001 9
 12% 2015
 8.78% 207 2015 7
 $0.25\% + 0.1077\% = 0.3577\%$ 30%
 0.3877% 8% 0.1%

1993

Wind

4

10 1.4% 1.5% 1.6% 25
 10 1.6% 1.62% 1.5%

"

"

" "

			"	"	26		
225	29000	3.99%	2020	4	1		
	2.80%						
			26	22			
0.40%	1.58%			3.5%	500	2.45%	
					"	"	
5	"						
2020						5.3%	
		3.6%					1
		1		1.6	"	"	
10.1%	2021						
						2021	
3.2%~3.3%			3.3				2021
							"
"							
					2020		
3.2%							
	2021						



"

"

2021 " "

6 1

2021 1

	1	4					0.6%
	0.3						0.5% 0.6%
1.0%	0.3%			1.3%			0.7
				0.9%	1.3%	1.4%	1.7% 31
					0.4%		0.3
	35						0.2%
0.3%			0.1				
	1						4.2%
9.6%			0.3 1.0				
			4.1% 2.5%				0.1 0.3
					3.3%		0.2
			1.5%			0.1	

Wind
