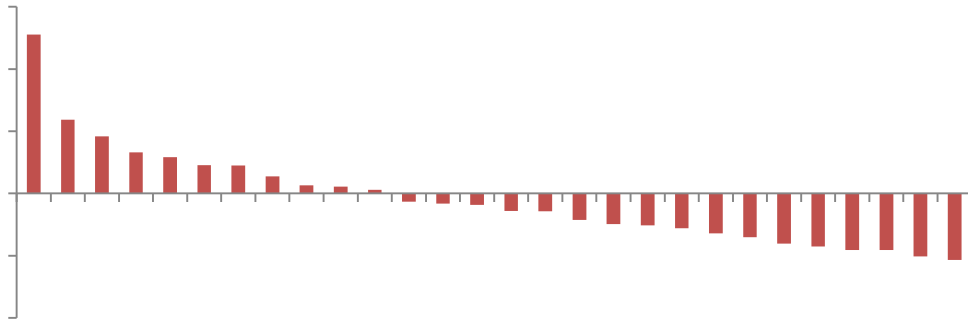


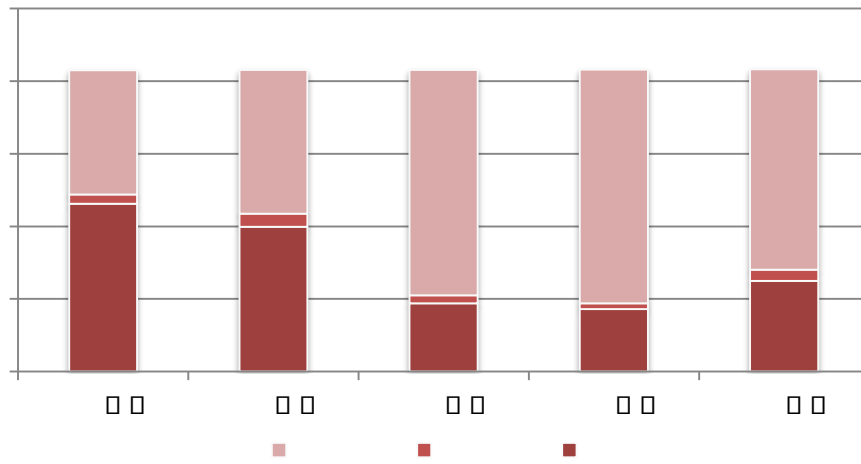
# 目 录

.....	2
.....	2
.....	2
.....	3
.....	3
.....	3
30 .....	4
.....	4
.....	4
.....	5
30 A .....	5
.....	5
.....	6
1 .....	6
2 1 PMI 1.5 .....	7
3 IPO .....	8
4 2019 GDP 2020 .....	9
5 2021 .....	10
6 .....	11

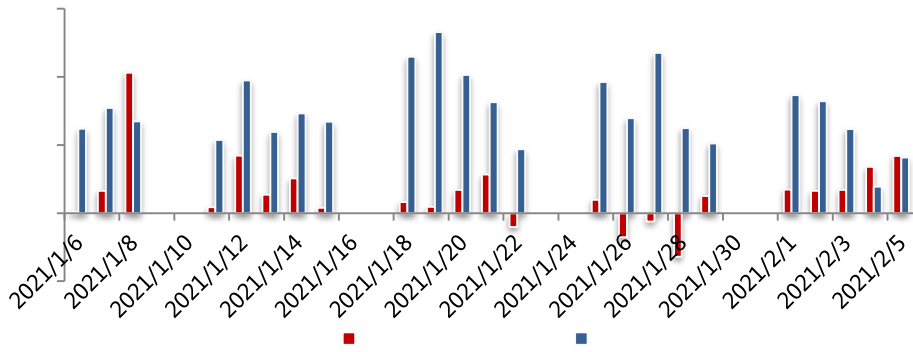
	3496.33	0.38%
	15007.30	1.25%
	10052.68	0.60%
	3193.71	2.07%
300	5483.41	2.46%
	29288.68	3.55%
500	3886.83	4.65%
( WIND 2021-2-1 2021-2-5)		

2021-2-1 2021-2-5 A  
 0.38% 3496.33 1.25% 15007.30  
 2.07% 3193.71

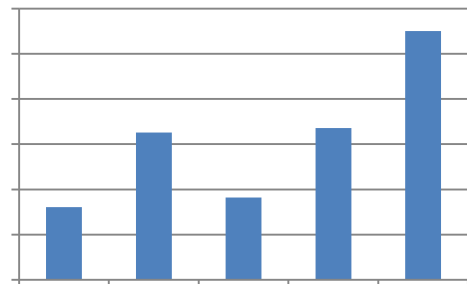
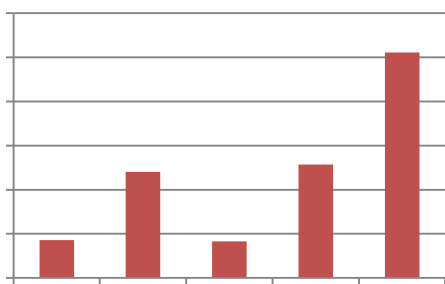




	253.26	581.51
	253.26	581.51
	652.83	3687.74



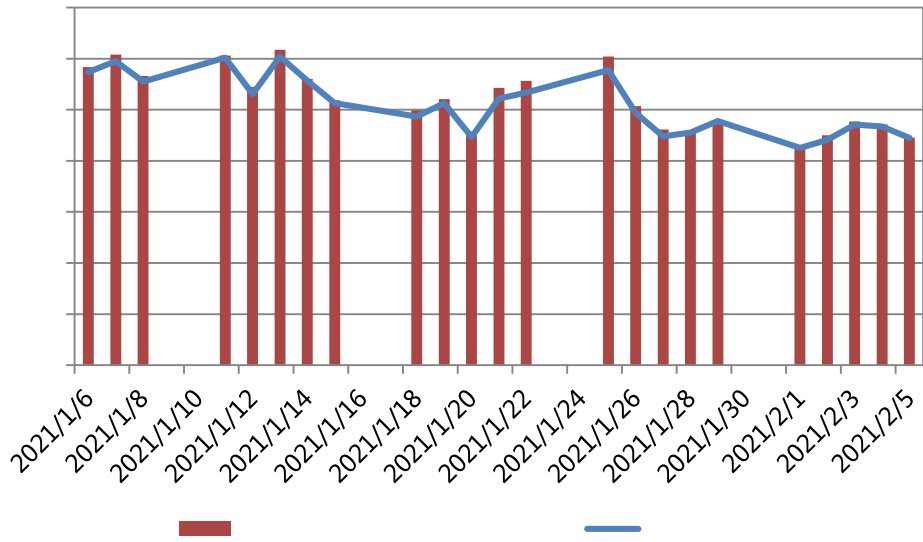
QFI I	25565.70	2.93%	3.94%
	25549.62	2.93%	3.94%
	16.07	0.00%	0.0025%



---

30 A

---



A

PMI

---

shi bor

A

"

"

1

2 5

2004

2019

+

+

---

2021

2 1

PMI 1.5

2 1

2021 1

PMI

1.5

51.5

2020 7

PMI

2021 1

PMI

51.3

0.6

2020 9

2021 1

2020 7

2021 1

3

IPO

2 7

IPO

"

"

1

2

"

"

12

3

4

5



---

6

7

8

12

9

10

12

36

4

2019 GDP

2020

2019

GDP

GDP

"

"

2020 GDP

2019

GDP

986515

( )

4350

6.0%

0.1

2019

GDP

4350

GDP



	GDP		2020
2019		GDP	GDP
		4	3

5 2021

	2021		10%
		7%	

GDP

---

6

2 7

24

" " " "

CMF

" "

" "

---

" "

" "

" "

---